



17, Rookwood Way, London, E3

BUTLER  STAG



Exceptional canal-facing apartment located in trendy Fish Island, combining elegant interiors with the best of urban living.



- Exceptional One Bedroom Apartment
- Canal-Facing with Private Balcony
- Third Floor within a Modern Development
- High Quality Contemporary Finish
- Moments from Hackney Wick
- Victoria Park Nearby
- Furnished
- Available from 21st March 2026

Occupying a third floor position within this attractive modern development, the floor-to-ceiling windows frame serene views over the canal, while allowing an abundance of natural light to stream into this wonderful space, which is finished to a high standard throughout.

Featuring a spacious open-plan kitchen / reception with access out onto a private balcony which provides the perfect setting for a morning coffee or evening meal overlooking the water, the property further comprises of a generous double bedroom with fitted wardrobes, gorgeous contemporary bathroom and an inviting hallway with plenty of internal storage space.

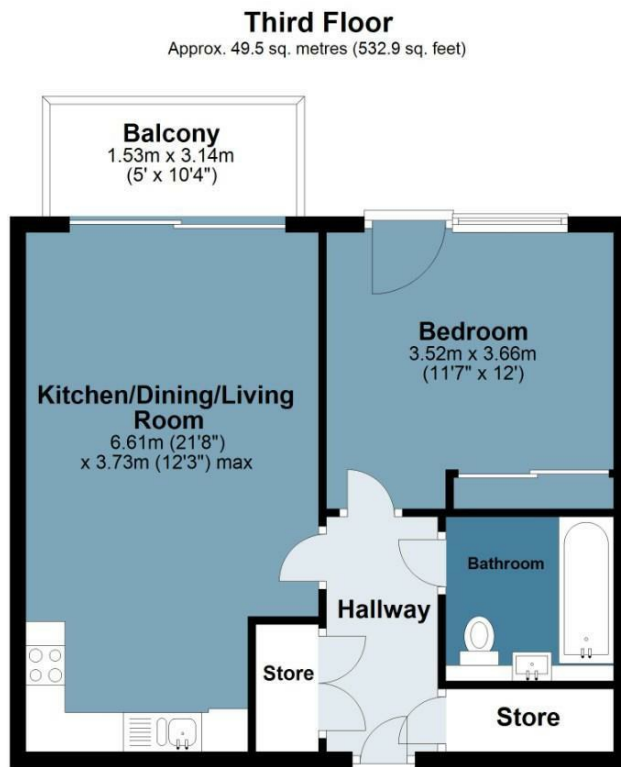
Halo Court offers a truly sought-after position, just moments from the overground station and social attractions of Hackney Wick, including artisanal dining experiences, popular gastropubs and canal-side bars. The ever-popular Victoria Park and Queen Elizabeth Olympic Park are also on your doorstep for those seeking open green spaces for outdoor pursuits.

Perfect for a single professional or a professional couple, this must-see apartment is offered furnished and is available from 21st March 2026.

EPC Rating B
Council Tax Band C







Total area: approx. 49.5 sq. metres (532.9 sq. feet)

All measurements have been taken as a guide to prospective buyers only and are not precise. This plan is for illustrative purposes only and no responsibility for any error, omission or misstatement. The services, systems and appliances shown have not been tested and no guarantee as to their operability or efficiency can be given. Measurements may have been taken from the widest area and may include wardrobe/cupboard space. No guarantee is given to any measurements including total areas. Buyers are advised to take their own measurements.
Plan produced using PlanUp.

Halo Court

IMPORTANT NOTICE - These particulars have been prepared in good faith and they are not intended to constitute part of an offer or contract. We have not performed a structural survey on this property and the services, appliances and specific fittings have not been tested. All photographs, measurements, floor plans and distances referred to are given as a guide and should not be relied upon.

BUTLER & STAG

☎ 020 8102 1236

🏠 508 Roman Road, Bow, London, E3 5LU

✉ bow@butlerandstag.com

www.butlerandstag.uk